



## KING'S HARBOUR MASTER PLYMOUTH

### LNTM No 010/24

#### PLNTM 010 JENNYCLIFF BAY VOLUNTARY NO ANCHOR ZONE INFO

#### PLYMOUTH LOCAL NOTICE TO MARINERS 010/24

#### JENNYCLIFF BAY VOLUNTARY NO ANCHOR ZONE (VNAZ) - INFORMATION

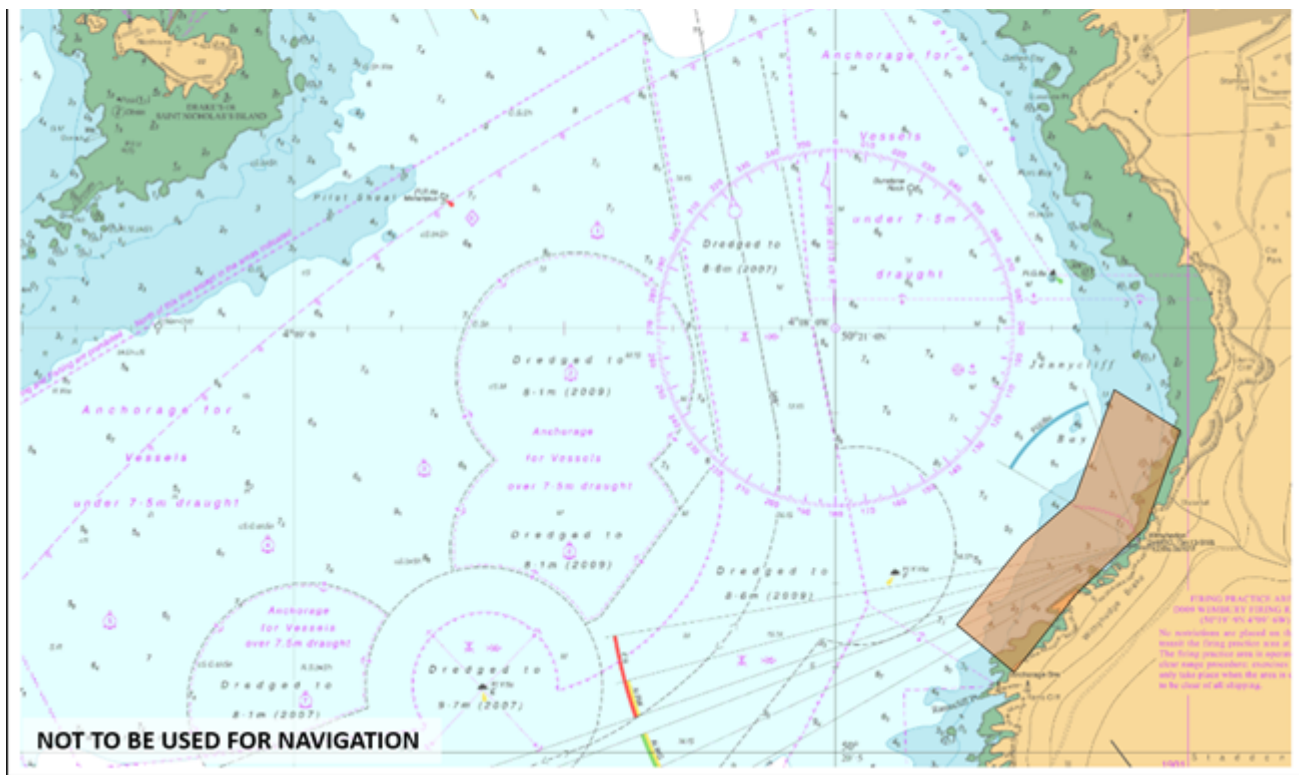
1. This notice is issued for information by the King's Harbour Master (KHM) Plymouth.
2. A project to grow seagrass is underway in the vicinity of Jennycliff Bay, Plymouth Sound (50° 20.760'N 004° 07.560'W).

Additional information can be found at [www.oceanconservationtrust.org/project/remedies-project/](http://www.oceanconservationtrust.org/project/remedies-project/)

3. To protect the beds whilst they are establishing, mariners are requested not to anchor, lay marks or pots in the southern part of Jennycliff Bay within the area outlined by the orange polygon on the chart extract at Annex A and bounded by surface marker buoys in the following positions:

50° 20.894'N	004° 07.421'W
50° 20.878'N	004° 07.535'W
50° 20.830'N	004° 07.564'W
50° 20.768'N	004° 07.638'W
50° 20.717'N	004° 07.726'W
50° 20.632'N	004° 07.756'W





Monday 01 Jan 2024

R Giles  
King's Harbour Master, Plymouth