



ADMIRALTY PILOTAGE SERVICE

Passage Plan for the Dockyard Port of Plymouth

Serial No Date Time of Move

SHIP / Type / Pilot

Pilot Boat

Start Time

End Time

From

To

HOT / COLD

Ship Details

Length

Draft

Beam

Propulsion

Rudder(s)

Thruster

Defects

.....

Pilot Transfer Position

.....

.....

Sea Conditions

Penlee Pt

Plymouth Snd

Tide

HWm

LWm

Rangem

Springs%

UKC /

Min Depthm

Min HoTm

Ship Drm

Min UKCm

At

TUGS / TYPE Attached

.....

.....

.....

.....

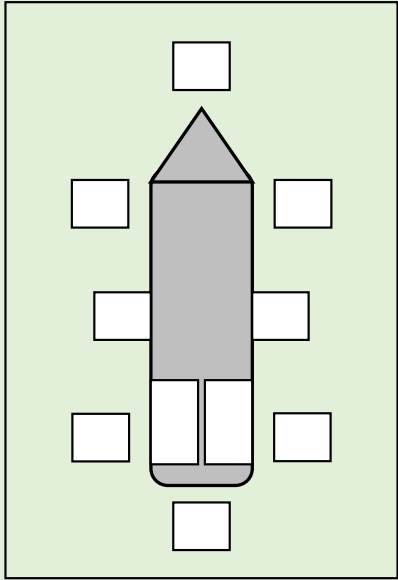
Visibility

Ham / Nar / Snd

Wind

Breakwater° Speedkts

Berth° Speedkts



Port Information

Other moves

.....

PLNTM / Nav Warn / Diving / Misc.

.....

Limits / Controls

Wind Limit kts

Tidal Window

Abort Options

.....

"We have discussed and agreed the ship's passage plan ...

... and the move was conducted satisfactorily".

CO sign

CO sign

Pilot sign



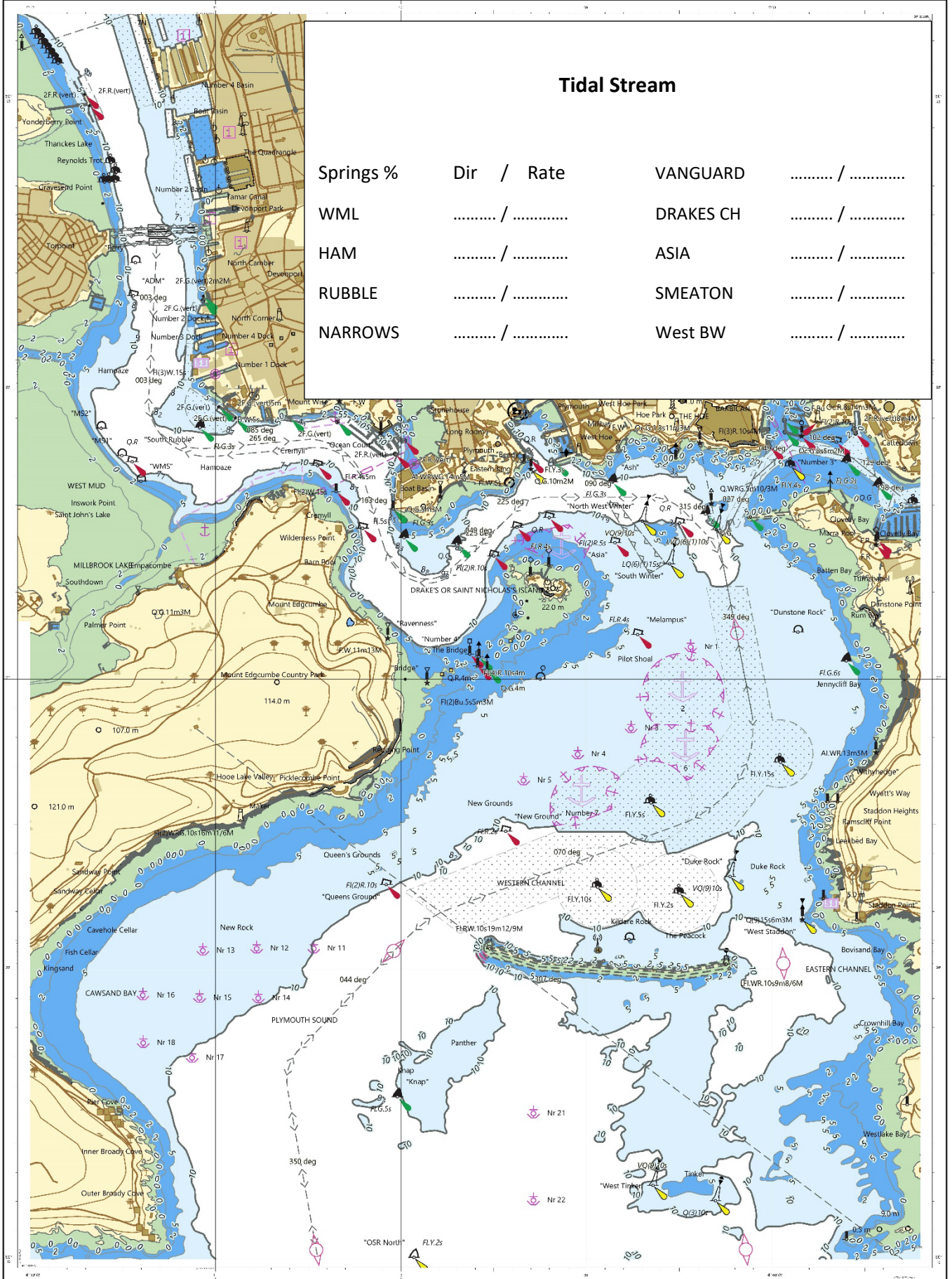
ADMIRALTY PILOTAGE SERVICE

Passage Plan for the Dockyard Port of Plymouth

UNITS IN METRES

OFFICIAL SENSITIVE : NOT FOR NAVIGATION
KHM Plymouth Plan 1

WGS 84



Tidal Stream

Springs %	Dir / Rate	VANGUARD /
WML /	DRAKES CH /
HAM /	ASIA /
RUBBLE /	SMEATON /
NARROWS /	West BW /

WGS 84



OFFICIAL SENSITIVE : NOT FOR NAVIGATION

UNITS IN METRES



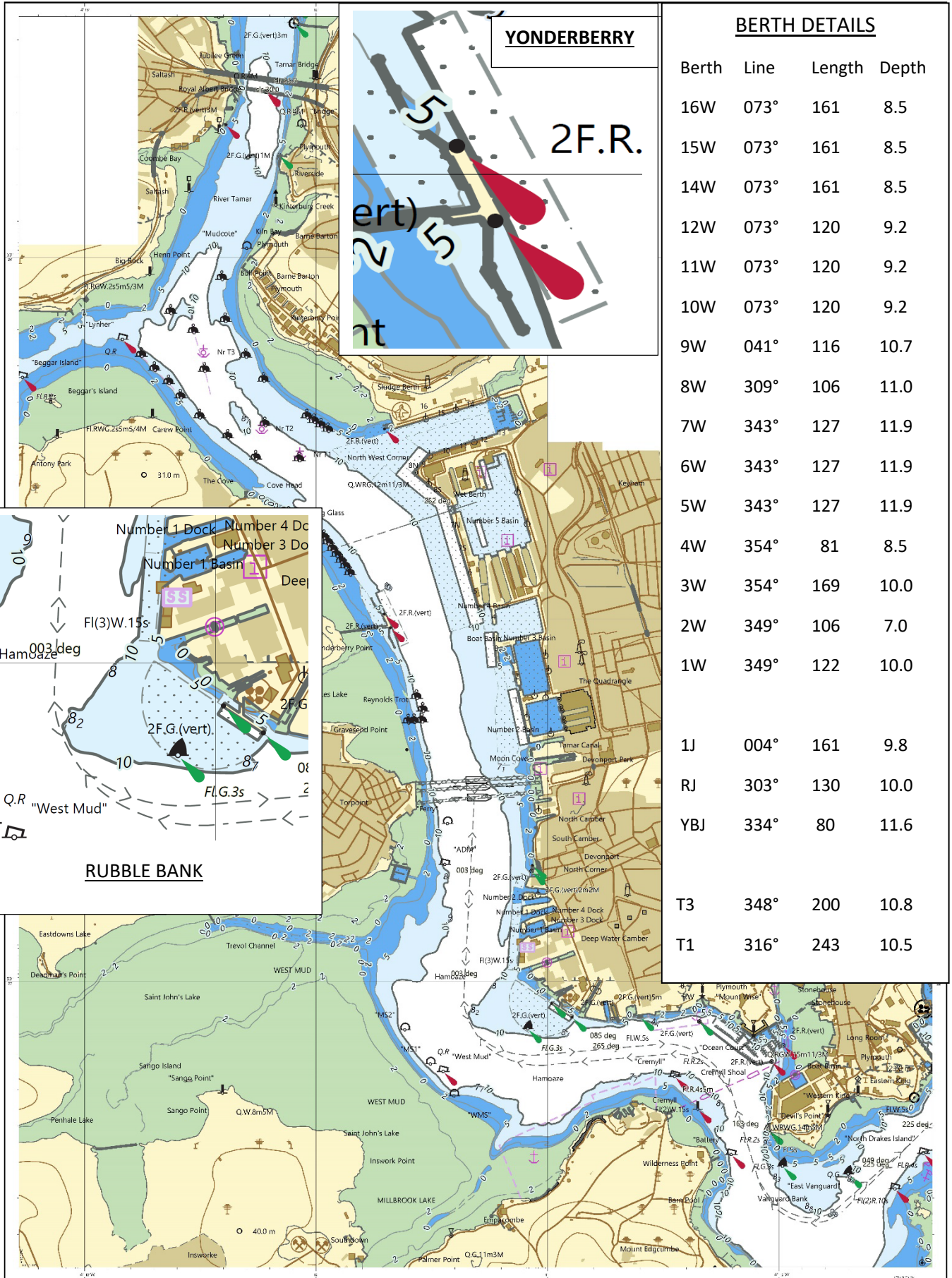
ADMIRALTY PILOTAGE SERVICE

Passage Plan for the Dockyard Port of Plymouth

UNITS IN METRES

OFFICIAL SENSITIVE : NOT FOR NAVIGATION
KHM Plymouth Plan 2

WGS 84



BERTH DETAILS

Berth	Line	Length	Depth
16W	073°	161	8.5
15W	073°	161	8.5
14W	073°	161	8.5
12W	073°	120	9.2
11W	073°	120	9.2
10W	073°	120	9.2
9W	041°	116	10.7
8W	309°	106	11.0
7W	343°	127	11.9
6W	343°	127	11.9
5W	343°	127	11.9
4W	354°	81	8.5
3W	354°	169	10.0
2W	349°	106	7.0
1W	349°	122	10.0
1J	004°	161	9.8
RJ	303°	130	10.0
YBJ	334°	80	11.6
T3	348°	200	10.8
T1	316°	243	10.5

YONDERBERRY

2F.R.

RUBBLE BANK

WGS 84



© Crown Copyright. All rights reserved. No part of this publication may be reproduced, stored in a retrieval system, or transmitted in any form or by any means, electronic, mechanical, photocopying, recording, or by any information storage and retrieval system, without the prior written permission of the Controller of Her Majesty's Stationery Office.

OFFICIAL SENSITIVE : NOT FOR NAVIGATION

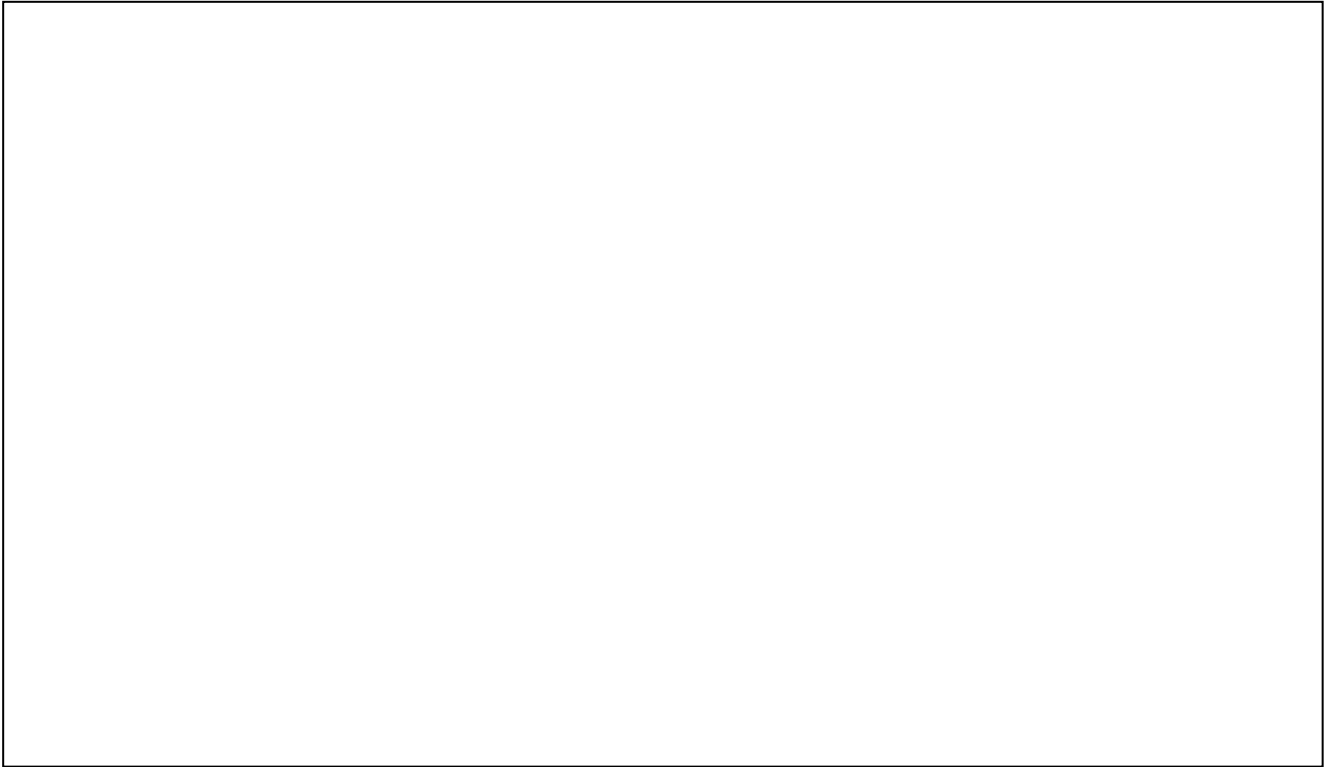
© Crown Copyright. All rights reserved. No part of this publication may be reproduced, stored in a retrieval system, or transmitted in any form or by any means, electronic, mechanical, photocopying, recording, or by any information storage and retrieval system, without the prior written permission of the Controller of Her Majesty's Stationery Office.

UNITS IN METRES



ADMIRALTY PILOTAGE SERVICE

Passage Plan for the Dockyard Port of Plymouth



WESTERN MILL LAKE

